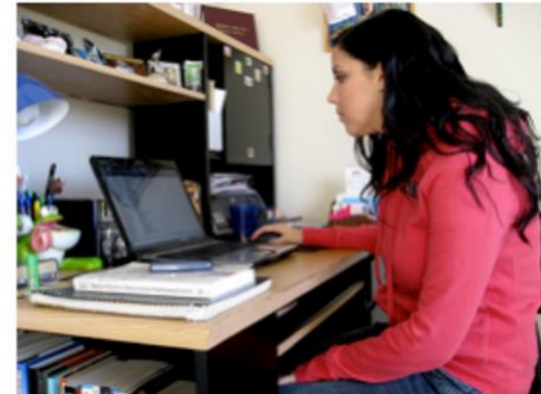


Contact North | Contact Nord Webinars  
13 December 2016



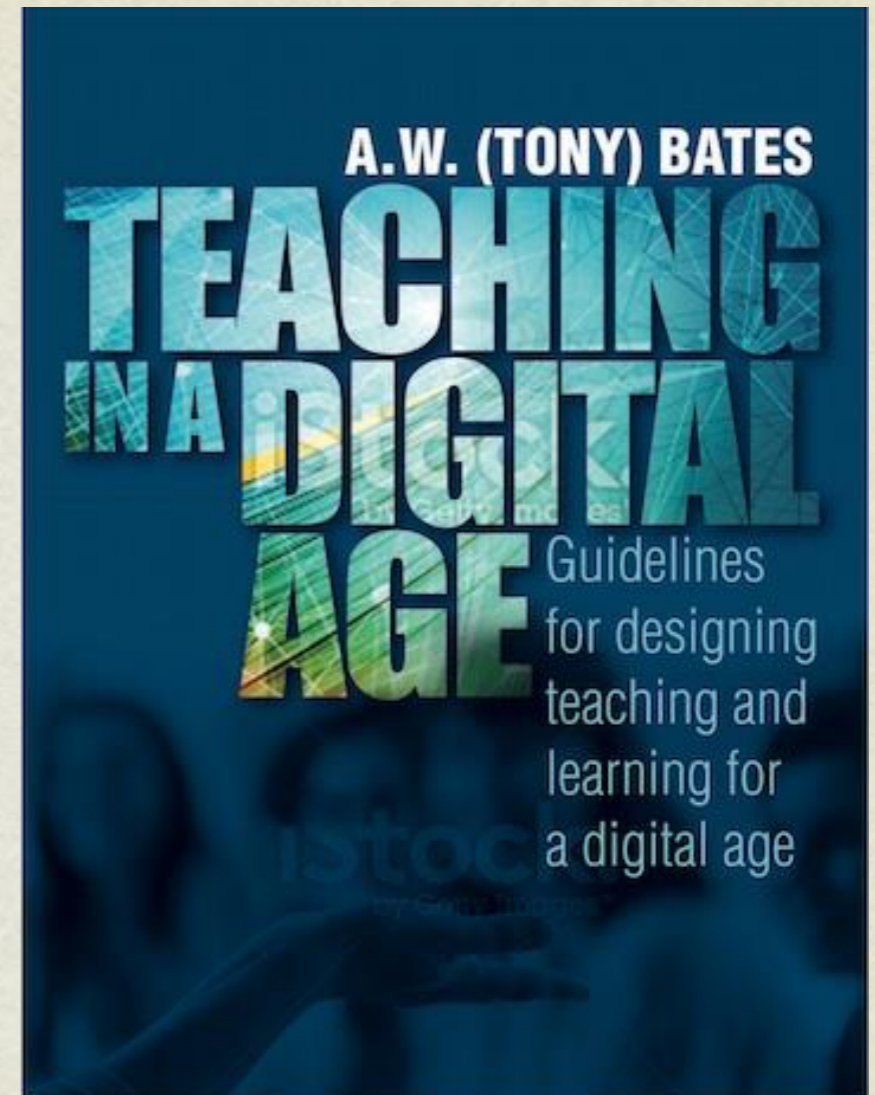
# CHOOSING MODES OF DELIVERY

How to Choose between Online, Blended or Campus-Based  
Delivery for Effective Learning

Dr. Tony Bates  
Research Associate  
Contact North | Contact Nord

# Seminar format

- Covering main issues in Chapters 9-10 of *Teaching in a Digital Age* (mainly Chapter 9)
- Short presentations followed by discussion
- General discussion after 45 minutes



# Topics

- The continuum of technology-based learning
- Four criteria for choosing mode of delivery
- Moving to blended learning
- What to do on campus?
- Impact of ‘open’



Why get on the bus to come to campus?

# Multiple modes of delivery



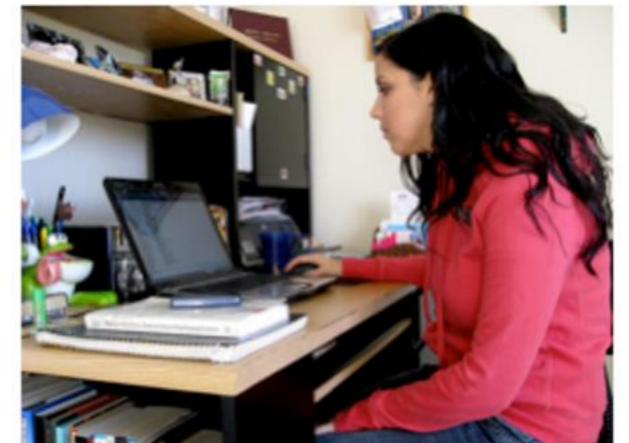
← blended →

**fully online**

**face-to-face** **classroom** **flipped** **hybrid** **(distance)**  
**aids**

← no technology (delivery) all technology →

# Questions/discussion



Which is best?

1. Does this continuum of delivery make sense to you?
2. Is one mode of delivery inherently the best? Why? What does the research say?
3. Comments/other questions on the continuum?

# Four criteria for choosing

Teaching approach	
Traditional	Digital
<u>Behaviourist</u> ←	→ Constructivist
Information transmission ←	→ Knowledge management
Content ←	→ Skills
Individual ←	→ Collaborative
? ←	→ ?

	Face-to-face	Online
Learn theory and terminology		<u>x</u>
Observe <u>analytes</u> under microscope	<u>x</u>	
Design experimental set-up using virtual equipment		<u>x</u>
Video of interactions under microscope		<u>x</u>
Insert glucose	<u>x</u>	

1. Students: which mode(s)? Multiple modes?
2. Identify teaching approach + necessary learner activities
3. What resources are available?
4. Analyse most appropriate mode for each learner activity

# Questions/discussion

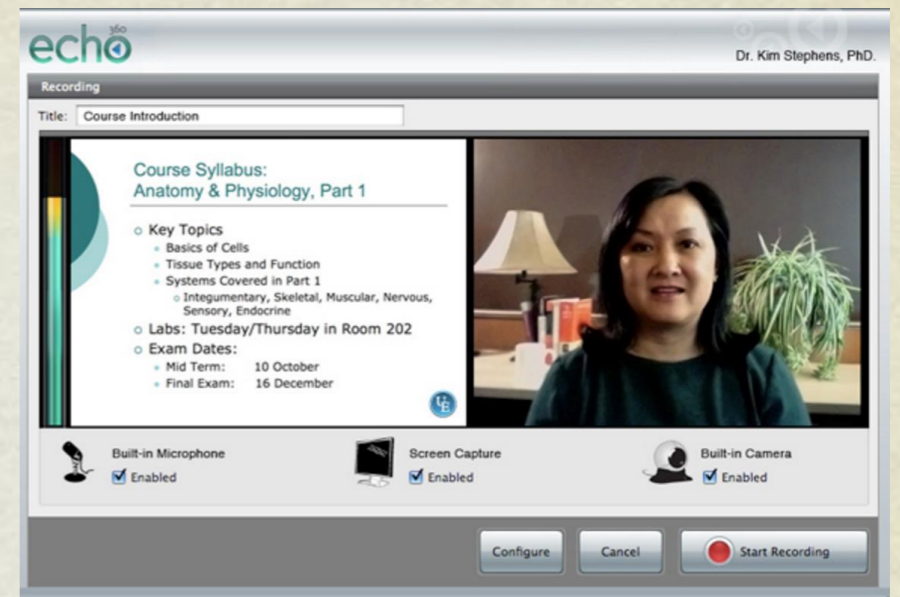
Teaching approach	
Traditional	Digital
<u>Behaviourist</u> ←	→ Constructivist
Information transmission ←	→ Knowledge management
Content ←	→ Skills
Individual ←	→ Collaborative
? ←	→ ?

	Face-to-face	Online
Learn theory and terminology		<u>x</u>
Observe <u>analytes</u> under microscope	<u>x</u>	
Design experimental set-up using virtual equipment		<u>x</u>
Video of interactions under microscope		<u>x</u>
Insert glucose	<u>x</u>	

1. Does it make sense to choose modes of delivery on this basis?
2. Is this a realistic approach? How else would you do it?
3. Any other suggestions/questions?

# Moving to blended/hybrid learning

- Last 2 years: big move to blended/hybrid learning (in Canada)
- Probably all classes will be ‘blended’ by 2020
- NOT a quantity issue but a **QUALITY** issue: do it well or do it badly
- What is the best use of face-to-face time? What is the right mix?



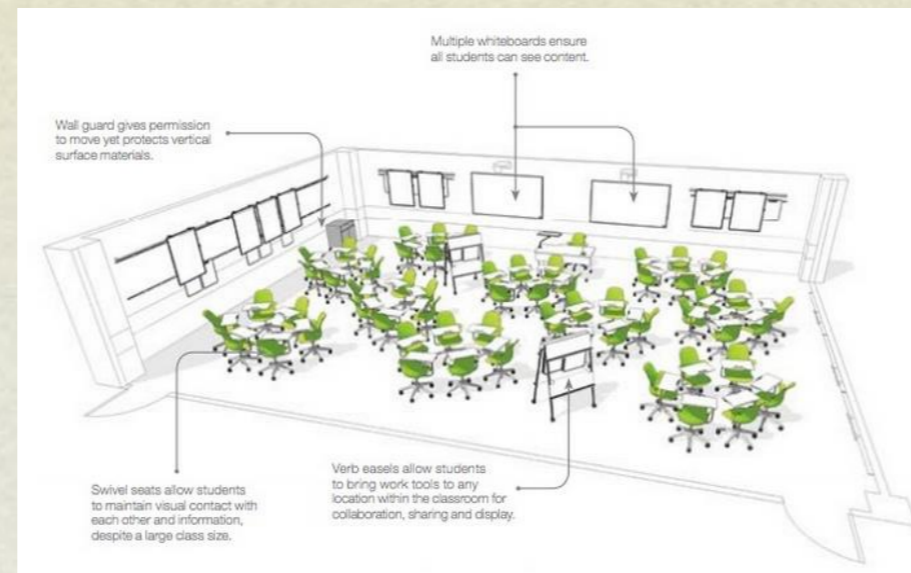


# Moving to blended learning

- LMS or lecture capture/podcasts or social media/mobile learning?
- Start slowly: flipped classrooms?
- Move to redesign (hybrid)
- Program strategy
- Institutional plan: resources, organisation



# What to do on campus?



- Unique teaching/learning functions?
- Impact on campus design
- Do we need campuses? If so for what?
- Any other questions/comments about role of campus?

# Moving to blended/hybrid learning

## Challenges:

- Leadership: vision and strategy for teaching/learning often lacking
- Organization: support in DE but needed on campus: major restructuring
- Resources: scaling is a problem (from 15% to 100%)



# Questions/discussion

1. What are the benefits/drawbacks of moving to blended learning?
2. How is your institution moving to blended learning? Is there a strategy? Do you need one?
3. Any other comments or questions on the move?



General discussion about modes of delivery?

**Your questions/comments**

