

# CHOOSING MODES OF DELIVERY

Deciding on the Right Mix of Online and Face-to-face Teaching: The Implications for Course Design and Campus Spaces



Dr. Tony Bates  
Research Associate  
Contact North | Contact Nord

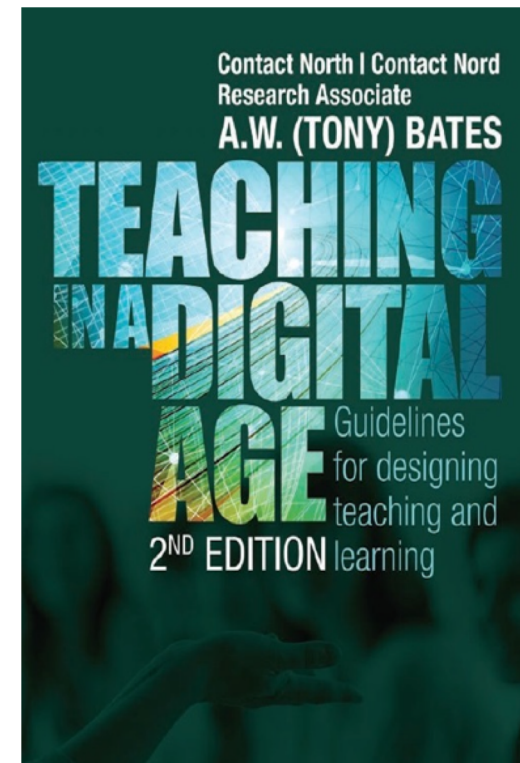
# Webinar Format

Aim of series:

- Discuss issues raised in Teaching in a Digital Age
- Draw on your experiences in addressing these and related issues

This webinar:

- Choosing between modes of delivery (Chapter 10)



# Overview: This Webinar

- The continuum of technology-based learning
- Affordances of campus-based teaching?
- Four criteria for choosing mode of delivery
- Moving to blended learning
- What to do on campus?



# Multiple Modes of Delivery



**face-to-face**

**classroom  
aids**

**flipped**

**hybrid**

**fully online  
(distance)**





# Questions/Discussion

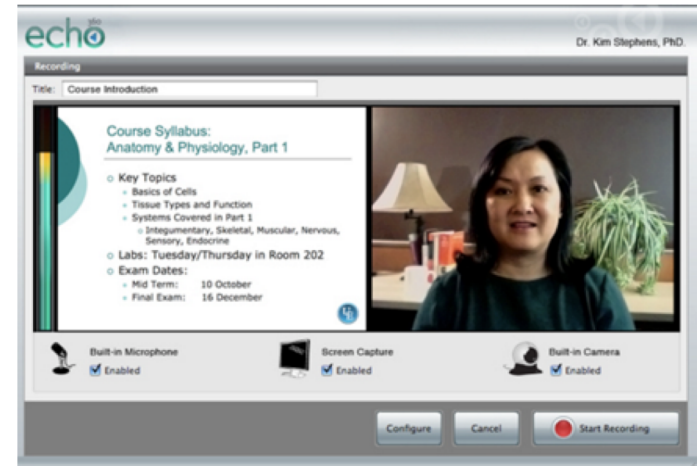


Which is best?

1. Does this continuum of delivery make sense to you?
2. Is one mode of delivery inherently the best? Why? What does the research say?
3. Comments/other questions on the continuum?

# Moving to Blended/Hybrid Learning

- Last few years: big move to blended/ hybrid learning (in Canada)
- Probably all classes will be 'blended' by 2025: are they now?
- NOT a quantity issue but a QUALITY issue: do it well or do it badly
- What is the best use of face-to-face time? What is the right mix?



# Many Forms of Blended Learning

1. Technology-enhanced learning (ppt, clickers, active classrooms)
2. f2F (lectures) + LMS (for supporting f2f)
3. Flipped: streamed video + f2f
4. 1 semester on-campus; 2 online (RRU)
5. Hybrid: f2f (reduced) + online

How to decide? No theory



# What Are the Unique Affordances of Face-to-Face Teaching?

- Default position: face-to-face is inherently superior: research says it ain't so: it's the conditions that matter
- Law of equal substitution: everything can be taught as well online as face-to-face, except.....
- So why get on the bus? What are exceptions?



Why get on the bus to come to campus?

# Four Criteria for Choosing

Teaching approach	
Traditional	Digital
Behaviourist	Constructivist
Information transmission	Knowledge management
Content	Skills
Individual	Collaborative
?	?

	Face-to-face	Online
Learn theory and terminology		x
Observe <u>analytes</u> under microscope	x	
Design experimental set-up using virtual equipment		x
Video of interactions under microscope		x
Insert glucose	x	

1. Students: which mode(s)? Multiple modes?
2. Identify teaching approach + necessary learner activities
3. What resources are available?
4. Analyse most appropriate mode for each learner activity



# 1. Students and Mode of Delivery

- Less experienced/younger: **campus** (first year?)
- Older/working: **online** (graduate; 4<sup>th</sup> yr U/G?)
- Full-time students working part-time: **blended**
- Dependent vs independent: a teachable skill: design it
- One course: all modes?



## 2. Teaching Approach + 3. Learner Activities

- Overall course design decision: what kind of course?
- What learning outcomes? Content vs skills
- What student learning activities?
- What resources are available?
- Which mode best fits learning activities?

Teaching approach	
Traditional	Digital
<u>Behaviourist</u>	Constructivist
Information transmission	Knowledge management
Content	Skills
Individual	Collaborative
?	?

	Face-to-face	Online
Learn theory and terminology		<u>x</u>
Observe <u>analytes</u> under microscope	<u>x</u>	
Design experimental set-up using virtual equipment		<u>x</u>
Video of interactions under microscope		<u>x</u>
Insert glucose	<u>x</u>	

# Questions/Discussion

Teaching approach	
Traditional	Digital
Behaviourist ←	→ Constructivist
Information transmission ←	→ Knowledge management
Content ←	→ Skills
Individual ←	→ Collaborative
? ←	→ ?

	Face-to-face	Online
Learn theory and terminology		<u>x</u>
Observe <u>analytes</u> under microscope	<u>x</u>	
Design experimental set-up using virtual equipment		<u>x</u>
Video of interactions under microscope		<u>x</u>
Insert glucose	<u>x</u>	

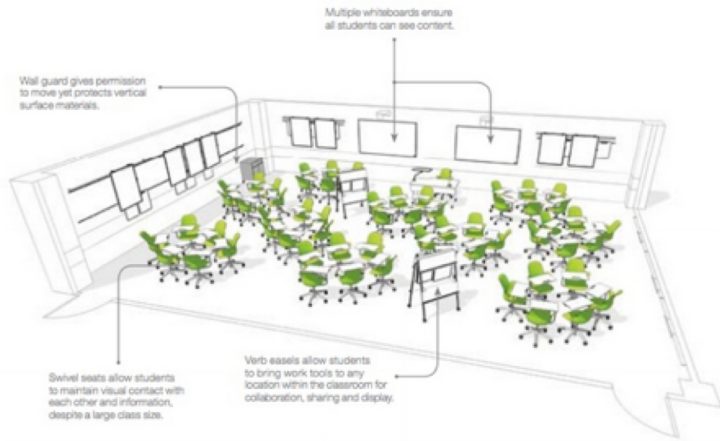
1. Does it make sense to choose modes of delivery on this basis?
2. Is this a realistic approach? How else would you do it?
3. Any other suggestions/questions?

# Moving to Blended Learning

- LMS or lecture capture/podcasts or social media/mobile learning?
- Start slowly: flipped classrooms?
- Move to redesign (hybrid)
- Program strategy: increase independent learning gradually
- Institutional plan: resources, organisation



# What to Do on Campus?



- Unique teaching/learning functions?
- Impact on campus design
- Do we need campuses? If so for what?
- Any other questions/comments about role of campus?



# Moving to Blended/Hybrid Learning

## Challenges:

- Leadership: vision and strategy for teaching/learning often lacking
- Organization: support in DE but needed on campus: major re-structuring
- Resources: scaling is a problem (from 15% to 100%)



# Questions/Discussion

1. What are the benefits/drawbacks of moving to blended learning?
2. How is your institution moving to blended learning? Is there a strategy? Do you need one?
3. Any other comments or questions on the move?



# General Discussion About Modes of Delivery?

Your questions/comments

